

# OnTheMove

The Monthly Newsletter from the Berard Team

April  
2024



## In This Issue:

- Load Out! | Topside Deck Load Outs
- Geaux Tigers! | LSU Boiler Transport
- For The Kids! | Touch A Truck Event

**BERARD**  
SINCE  
1945

The Mega Transport Experts

# Load Out! Topside Deck Load Outs



## Job Specs

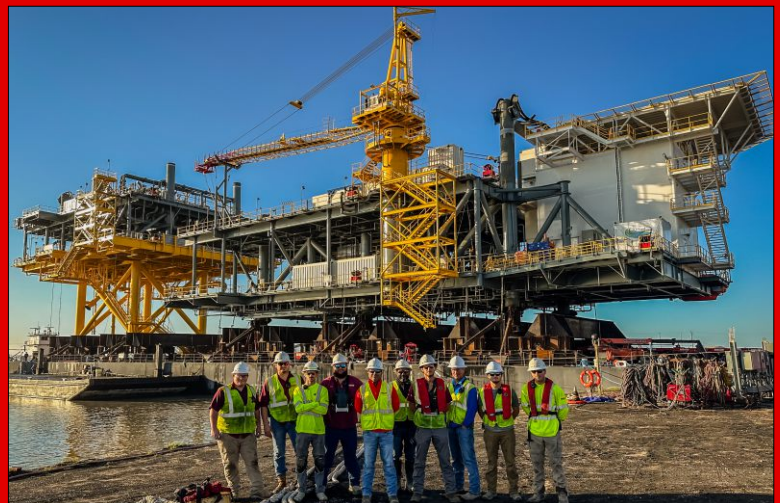
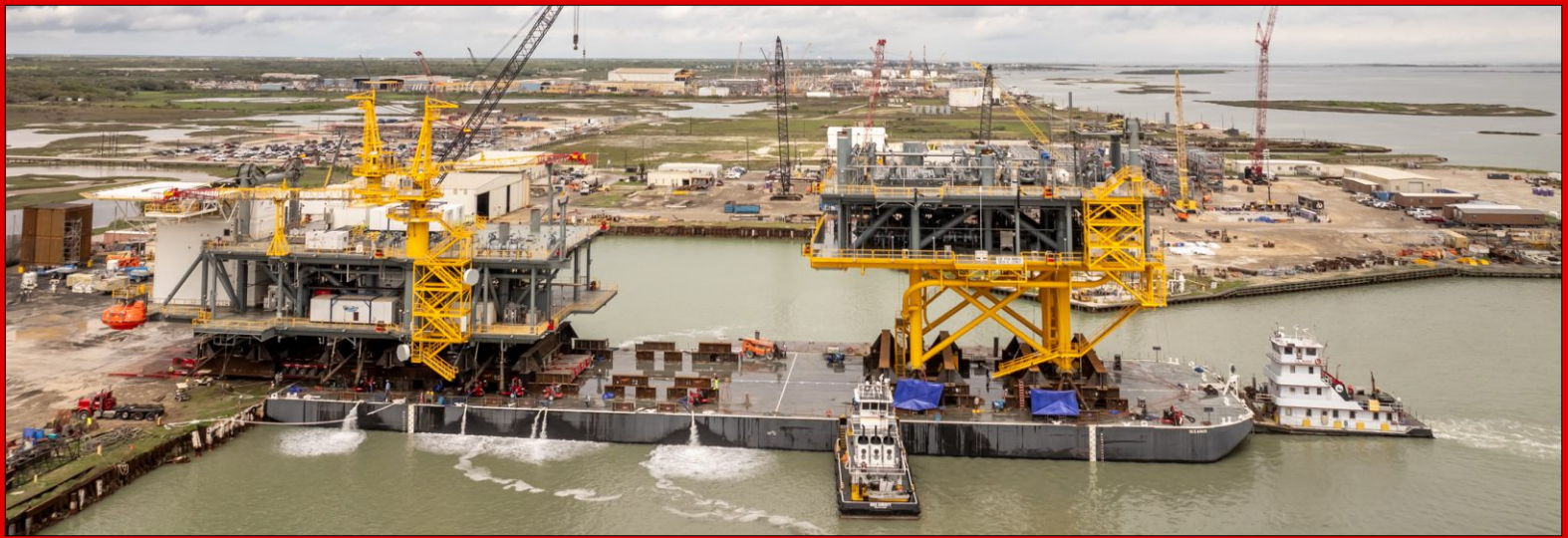
**Weight:** 2,213 & 2,480 Tons

**Dimensions:**  
107'L x 87'W x 114'H  
167'L x 97'W x 116'H

**Equipment Used:**  
116 axle lines of SPMTs, 8 power packs, 2 deck spacers, barge ramps, crane mats, steel plate and winch trucks

Massive load outs are our specialty. The team was commissioned to load out two massive topside decks for a South Texas fabricator. A total of 116 axle lines of self propelled modular transporters were used to lift and transport the enormous 2,213 and 2,480 ton decks through the fabricator's yard to the bulkhead for load out. A 90 degree turn was initiated to orient the decks for roll on. A series of barge ramps were configured to ensure ground support as well as allow the SPMTs to climb to barge deck level. Ballast operations commenced and the team began the process of slowly transferring the decks from ground to the deck barge and into final position. The team accomplished this in a span of three days, putting the client ahead of schedule due to the hard work and dedication of our amazing team.





# Geaux Tigers!

# LSU Boiler Transport



## Job Specs

**Weight:**  
124,000 lbs.

**Dimensions:**  
42'-10" L x 15'-11" x 15'-10" H

**Equipment Used:**  
13 axle steerable TrailKing lowboy trailer, prime mover, escort vehicles and laminated crane mats

When it was time to deliver a package boiler from the manufacturer in Lincoln, Nebraska to the LSU campus in Baton Rouge, Berard got the call. The purple and gold accented boiler was a part of the LSU "Powerhouse" cogeneration renovation project, which supplies power and steam to the campus. The team transported the cargo on a 13 axle TrailKing steerable lowboy for the 1600-mile transport to Baton Rouge. With a total transport length of 152 feet, the trailer provided to be the right choice for optimum maneuverability, especially through the historic oak trees on the LSU campus. LSU alumnus Brett Beard and his team were proud to be chosen as the transportation contractor for this unique project. **Geaux Tigers!**





# For The Kids! Touch A Truck Event



The Berard team had an incredible day at the Junior League of Lafayette's inaugural Touch a Truck event! We enjoyed showing kids (and adults) our transport equipment and exploring other machinery on display. This was an instant hit for Lafayette with lots of visitors and displays. Thanks to all volunteers and guests who made this possible.



## > Birthdays @ Berard

*Happy  
Birthday!*

**Happy Birthday to These Dedicated Team Members!**

**David Hargraves  
Jesse Pelous  
Kyle Thibodeaux  
Jordan Tyler**